

PUCEM HF

Packing:

4 componenten

Component A: 2,5 kg Hars

Component B: 2,7 kg Verharder

Filler: 25 kg

Pigmentpasta: 0,3 kg

Set totaal: 30,5 kg

Properties:

- High chemical resistance
- Flexural Strength > 18 N/mm²
- Compressive Strength > 50 N/mm²
- Resistant to thermal shocks
- High temperature resistant
- Slip resistance R 11
- Abrasion resistance

Explanation:

PUCEM HF is an aromatic four-component, solvent-free, pigmented floor finish based on a polyurethane cement. PUCEM HF is mechanically strong and non-slip. It is a robust, wear-resistant floor with a long service life.

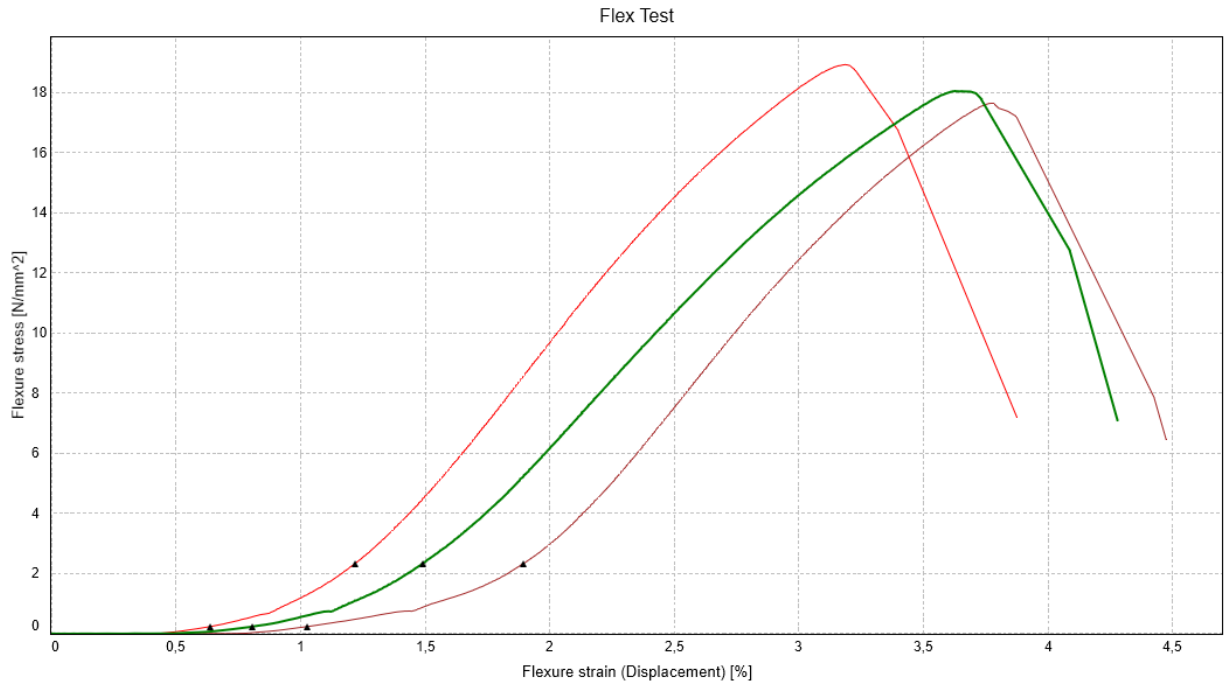
A PUCEM HF floor is liquid-tight, making it the ideal floor finish for the food, chemical and pharmaceutical industries. The floor is resistant to chemicals such as many types of acids, alkalis, salts and solvents, but also to mineral oils, kerosene, gasoline, diesel and brake fluid.

In addition, the floor is extremely heat resistant and resistant to thermal shock (hot water). PUCEM HF is normally loadable after 24 hours.

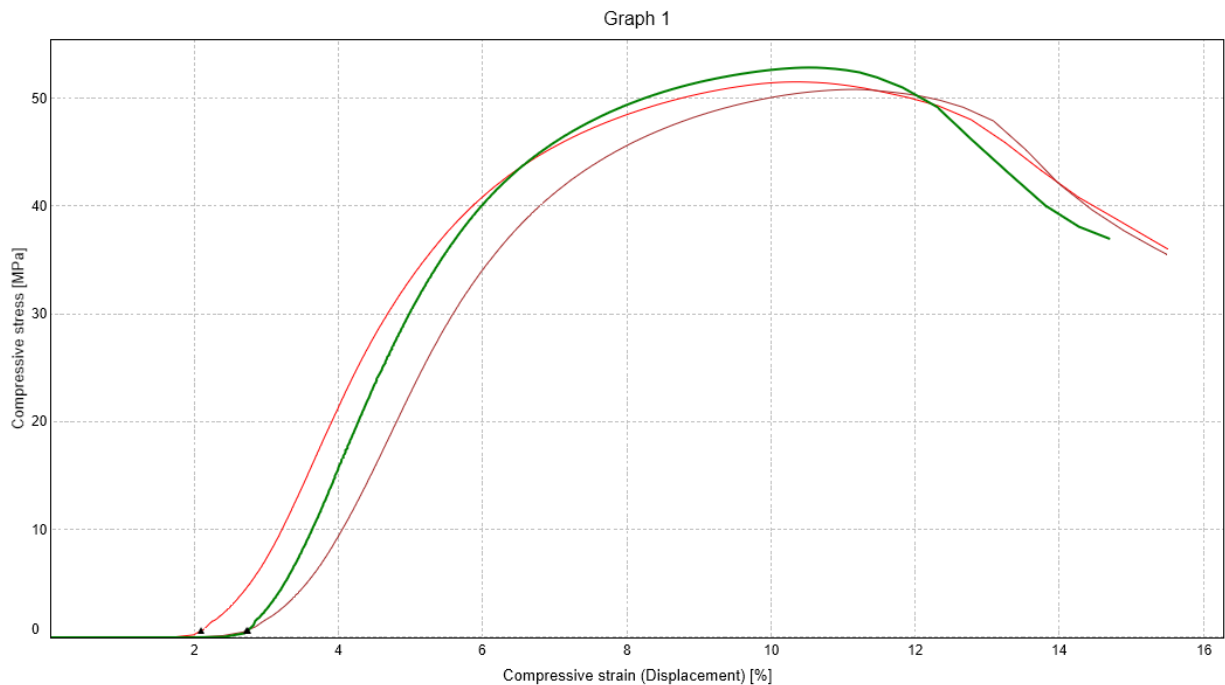
Applications:

- Food industry
- Chemical industry
- Pharmaceutical industry
- Dairy industry
- Company kitchen
- Bottle lines

Flexural Strength :



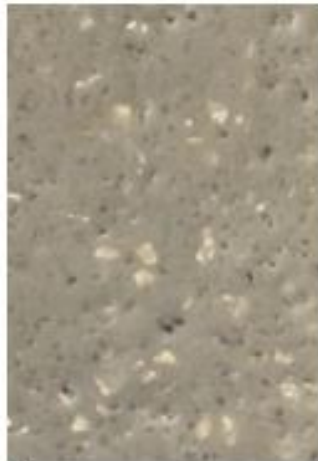
Compressive Strength:



Colors:



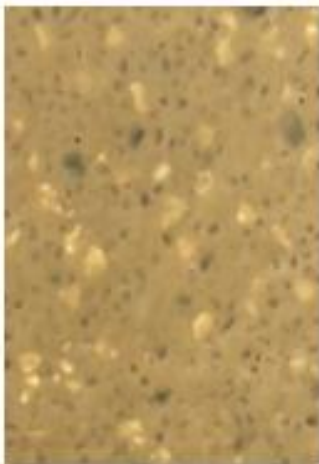
Light grey



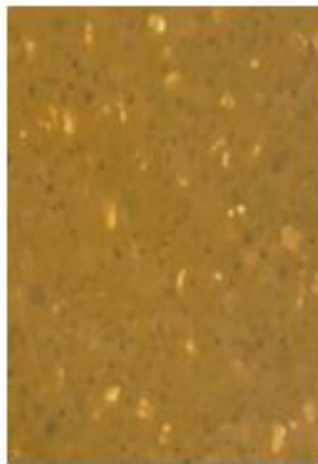
Grey



Dark grey



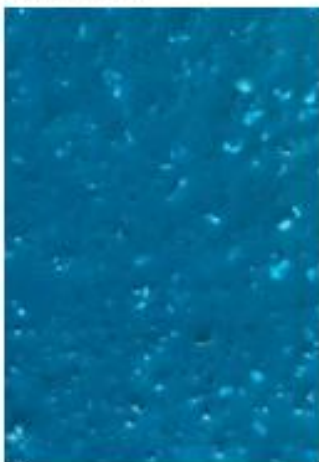
Light yellow



Yellow



Green



Blue



Red

Consumption

System	Product	Consumption
Gietlaag	PUCEM HF	22 kg/m ²

Usage:**PAY ATTENTION!**

- Please check if you have the right components.
- Mixing is very important.

Apply the mixing times strictly because otherwise no chemical reaction takes place.

- When applying the product please wear the right personal protective equipment

1. Pour the A-Component into a bucket and add the pigment paste.
2. Then add the entire contents of component B to component A.
3. Mix for approximately 30 seconds with a Collomix Xo 55 R Duo or WK 120 HF mixing rod until a homogeneous mixture is formed. Avoid scraping with the mixing rod along the wall of the bucket.
4. Add the filler and mix thoroughly for about 1 minute until a homogeneous mixture is formed. When mixing for too long, the product will already react in the bucket, which significantly reduces the flow and processability. Avoid scraping with the mixing rod along the wall of the bucket.
5. Pour out the mixture and distribute evenly with a floor spoon over the subfloor. Always pour the entire contents of the bucket at once. This is to prevent a quick reaction of material in the bucket.
6. For even consumption in a large room, it is recommended that the room is divided into planes or strips with pieces of tape. This way you can better regulate consumption.
7. Reroll with a nylon fur roller to roll away the application traces of the floor chip
8. When the entire subfloor is evenly coated, the floor must harden for about 24 hours before it can be walked on. Of course, first test whether the floor is actually walkable!

Substrate:

The substrate must be sound and sufficiently compression-resistant (minimum 25 N/mm²), with a minimum adhesive strength of 1,5 N/mm².

The surface must be clean and dry and free of dirt, oil, grease and other contamination.

The improper assessment and treatment of cracks can lead to reduced service life and recurrent cracks.

Concrete substrates, ball blasting or diamond sheds to remove any cement veil and achieve an open textured surface.

Remove weak concrete and loose cementitious substrates and repair surface damage such as holes and cavities.

It is important to cut the subfloor along gutters and walls so that the PUCEM can anchor itself to the subsoil.

All dust, loose and friable material should be completely removed from all surfaces before applying the product, preferably using a brush and/or industrial vacuum cleaner.

Remarks:

Do not use PUCEM HF on surfaces with rising damp.

After application, the PUCEM HF must be protected from moisture, condensation and water for at least 24 hours (+20 °C).

Immediately process all the mixed material because otherwise the flow will quickly decrease.

Use material with the same batch numbers to ensure an exact and even color.

If heating is needed, do not use gas, oil, paraffin or other fossil fuel heaters, as they produce large amounts of CO₂ and water vapor that can adversely affect the finish.

Only use electrically powered hot air blower systems when heating is needed.

Turn off the underfloor heating during application, and during the first 48 hours you can gradually increase the temperature after this period.

Process the PUCEM HF in a room with the windows taped off, to prevent direct sunlight and prevent heating of the floor. Sunlight can be harmful to the floor finish and can cause surface disturbances.

Health and Safety Information:

For information and advice on the safe handling, storage and disposal of chemical products, the user should consult the most recent product safety data sheet, concerning physical, ecological, toxicological and other safety-related data.

Legal Notice:

The information, especially the recommendations regarding the application and end use of Eurostep products, is provided in good faith based on Eurostep's current knowledge and experience with products properly stored, handled and applied under normal conditions.

In practice, differences in materials, substrates and actual site conditions may be such that no warranty as to merchantability or fitness for a particular purpose can be derived from this information and advice, nor any liability arising from any legal relationship, based on this information, or from any written recommendations or any other advice given.

Eurostep reserves the right to change characteristics of products.

The property rights of third parties must be respected.

All orders are accepted under the current sales and delivery conditions. Users should always consult the most recent edition of the product safety data sheet for the product in question. Copies of these will be provided upon request.